



GREETINGS FROM HINEMIHI LONDON!



HINEMIHI 1880

NGATI HINEMIHI, TE WAIROA, NEW ZEALAND (AOTEAROA)



Lake Tarawera and the Rotomahana
Pink & White Terraces
(Otukapuarangi & Te Tarata)

HINEMIHI 1881

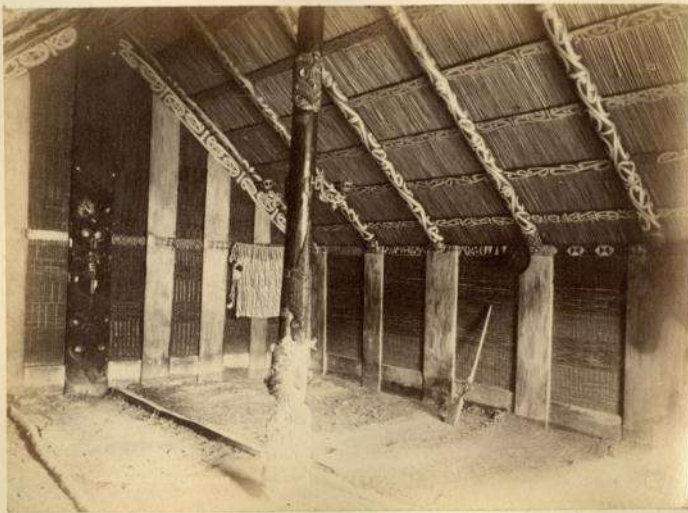
NGATI HINEMIHI, TE WAIROA, NEW ZEALAND (AOTEAROA)



3846. RUPERTON HOUSE (HINEMIHI) WAIROA.

HINEMIHI 1881

NGATI HINEMIHI, TE WAIROA, NEW ZEALAND (AOTEAROA)



HINEMIHI'S PEOPLE (1881)



Chief Wi Kepa Rangipuawhe,
Ngati Tuharangi



Chief Aporo Wharekaniwha and his wife
Ngareta, Ngati Hinemihi

HINEMIHI'S PEOPLE (1881) NGATI HINEMIHI



Tene Waitere, one of
Hinemihi's principle carvers



HINEMIHI'S PEOPLE (1881)

NGATI HINEMIHI

Guides: Sophia Hinerangi, Kate Middlemass and Ngareta, wife of Aporo Wherekaniwha



HINEMIHI 1886

THE VOLCANIC ERUPTION OF MOUNT TARAWERA, NEW ZEALAND
(AOTEAROA)



HINEMIHI 1886 FOLLOWING THE VOLCANIC ERUPTION, TE WAIROA, NEW ZEALAND (AOTEAROA)



HINEMIHI 1886 FOLLOWING THE VOLCANIC ERUPTION, TE WAIROA, NEW ZEALAND (AOTEAROA)



Received from Mr C. Mansford per cheque the sum of Twenty five pounds 8s (25-0-0) being half the purchase money for 23 pieces of Maori Carving originally part of the Native Hunting Lanes at Te Wairoa and known as 'Te Hinemihi' which I have this day sold to His Excellency the Governor Lord Onslow for the sum of Fifty pounds Sterling (50-0-0) the balance of which is £25-0-0 together with the sum of Three pounds 8s (3-0-0) for the carriage of the said piece of carving from Te Wairoa to Oxford to be paid to me upon my producing a receipt from the Railway Station Master at Oxford to the effect that the said 23 pieces of carving have been duly delivered to him for transmission by rail to Auckland.

Wairoa 21st Jan^y 1892.

Wairoa 21st Jan^y 1892

Wairoa 21st Jan^y 1892

Wairoa 21st Jan^y 1892

Wairoa 21st Jan^y 1892

Wairoa 21st Jan^y 1892

Wairoa 21st Jan^y 1892

Wairoa 21st Jan^y 1892

Wairoa 21st Jan^y 1892

Wairoa 21st Jan^y 1892

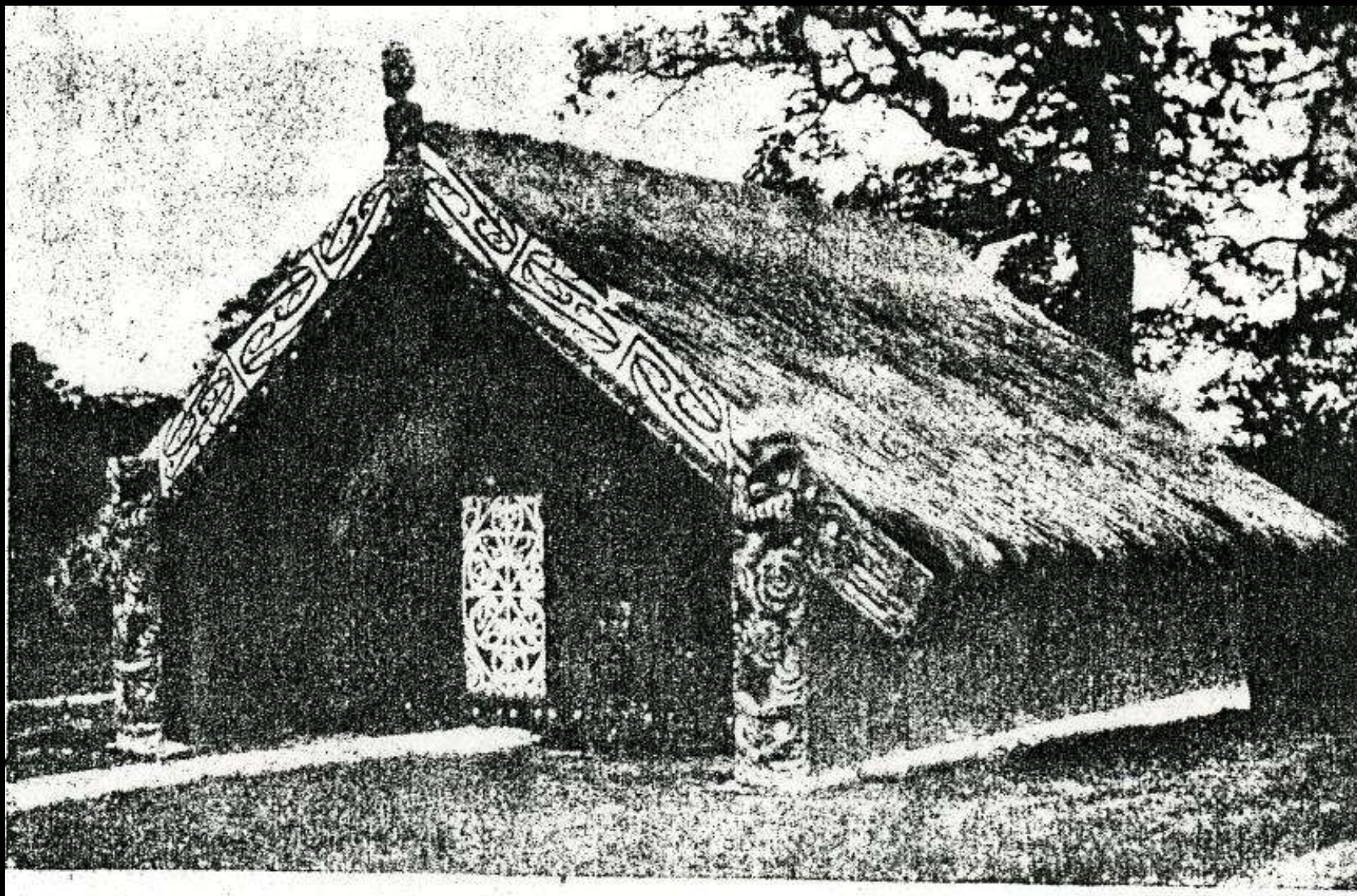
Wairoa 21st Jan^y 1892

Wairoa 21st Jan^y 1892

Hinemihi is purchased by the 4th Earl of Onslow and transported to Clandon Park in 1892

HINEMIHI 1892-1956

THE ONSLOW FAMILY, CLANDON PARK, UK.



1899

HINEMIHI 1892-1956

THE ONSLOW FAMILY, CLANDON PARK, UK.



1903

HINEMIHI 1892-1956

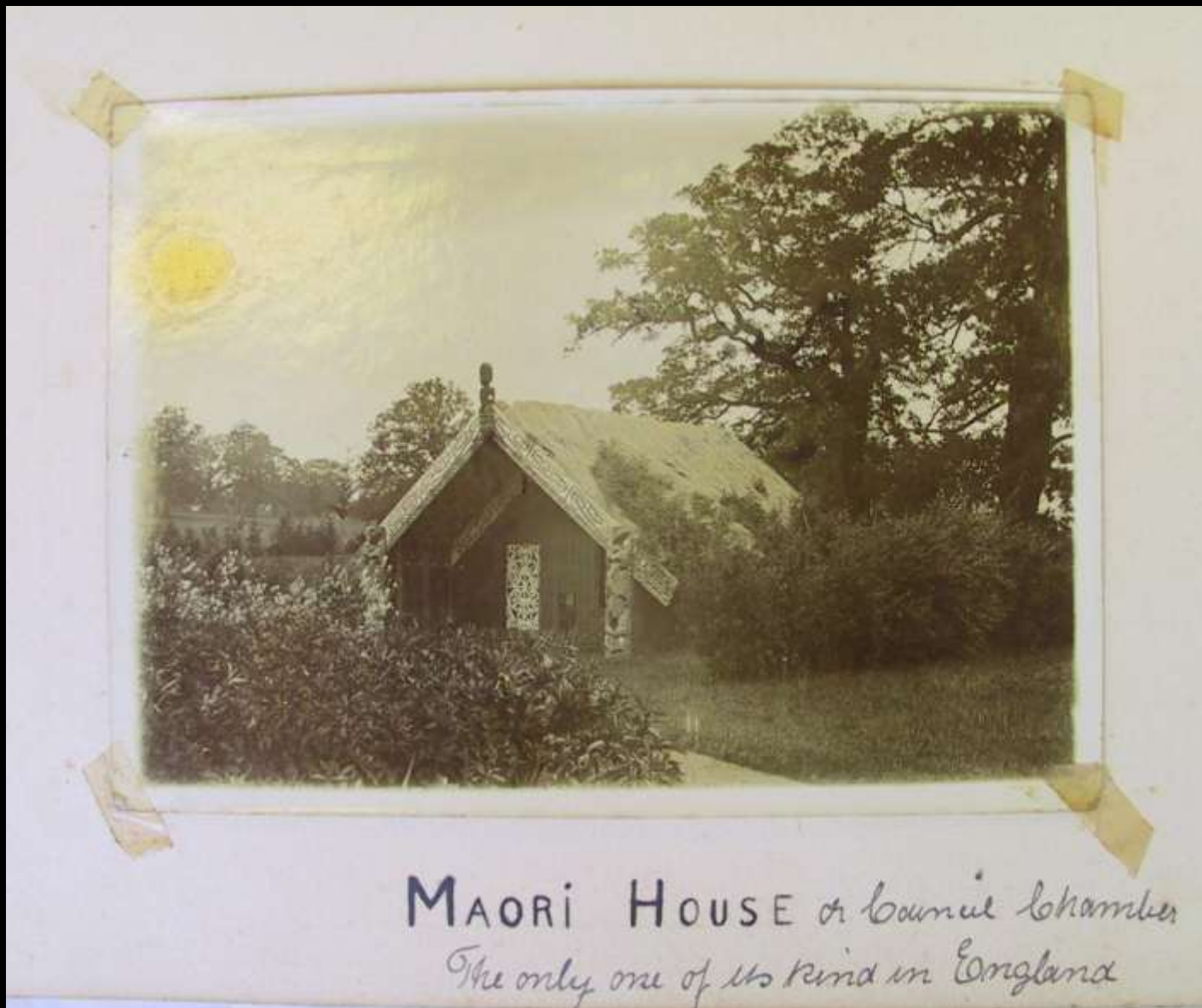
THE ONSLOW FAMILY, CLANDON PARK, UK.



1914

HINEMIHI 1892-1956

THE ONSLOW FAMILY, CLANDON PARK, UK.



MAORI HOUSE of Cornish Chamber
The only one of its kind in England

1914

HINEMIHI 1892-1956

THE ONSLOW FAMILY, CLANDON PARK, UK



Maori Pioneer Battalion 1919

HINEMIHI 1892-1956

THE ONSLOW FAMILY, CLANDON PARK, UK.



1943



HINEMIHI 1892-1956

THE ONSLOW FAMILY, CLANDON PARK, UK.



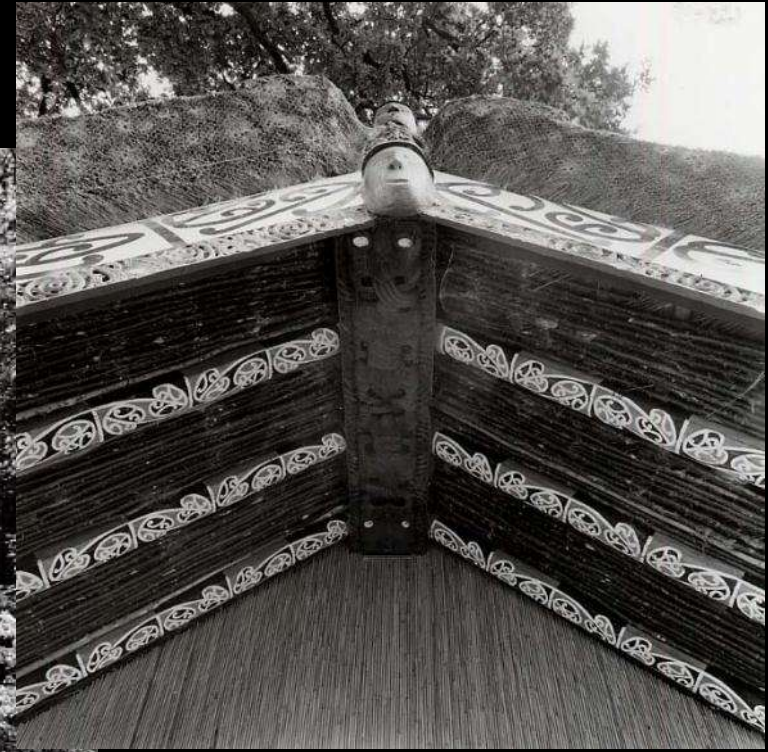
1958

HINEMIHI 1956-PRESENT
THE NATIONAL TRUST, CLANDON PARK, UK



1960

HINEMIHI 1956-PRESENT
THE NATIONAL TRUST, CLANDON PARK, UK



1981

HINEMIHI (1995) NEW CARVINGS FOR HINEMIHI AT CLANDON PARK FROM NGATI HINEMIHI



Colin Tihi, Emily Schuster & Robert Rika (outside Guide Rangī's Hinemihi in Whakarewarewa, Rotorua)

HINEMIHI (1995) NEW CARVINGS FOR HINEMIHI AT CLANDON PARK FROM NGATI HINEMIHI



Robert, James and Cathy
Schuster, Colin Tihi & Robert Rika



1995 NGATI HINEMIHI, RESTORING HINEMIHI'S CARVINGS



Colin Tihi, Robert Rika, and James Schuster (*Ngāti Hinemihi*)

HINEMIHI AS THE ADOPTED MEETING HOUSE OF NGATI RANANA, USED AS A FUNCTIONING MARAE SINCE 1995



A Centre for
Maori culture
in the UK?



TE KOHANGA REO AND NGATI RANANA AT THE KOHANGA REO ANNUAL HANGI, CLANDON PARK. 1995-PRESENT



Kohanga Reo o Ranana annual hangi



Kohanga Reo o Ranana annual hangi



Kohanga Reo o Ranana annual hangi



Kohanga Reo o Ranana annual hangi



Kohanga Reo o Ranana annual hangi



Kohanga Reo o Ranana annual hangi



Kohanga Reo o Ranana annual hangi



Kohanga Reo o Ranana annual hangi



Kohanga Reo o Ranana annual hangi



Kohanga Reo o Ranana annual hangi



Kohanga Reo o Ranana annual hangi



Kohanga Reo o Ranana annual hangi



Kohanga Reo o Ranana annual hangi



Kohanga Reo o Ranana annual hangi



Kohanga Reo o Ranana annual hangi



Kohanga Reo o Ranana annual hangi



Kohanga Reo o Ranana annual hangi



Kohanga Reo o Ranana annual hangi



Kohanga Reo o Ranana annual hangi



Kohanga Reo o Ranana annual hangi



Kohanga Reo o Ranana annual hangi



Kohanga Reo o Ranana annual hangi



Kohanga Reo o Ranana annual hangi



HINEMIHI AND HER PEOPLE



HINEMIHI AND HER PEOPLE



HINEMIHI AND HER PEOPLE

“Because we could feel the presence of our ancestors, including those who sheltered inside Hinemihi during the eruption, as well as those who didn’t make it to safety. By touching the carvings we could hear their screams and feel their pain”



(Emily Schuster, Ngati Hinemihi 1986, quoted in Gallop 1998.130)



HINEMIHI AND HER PEOPLE NGATI HINEMIHI, SCHUSTER WHANAU

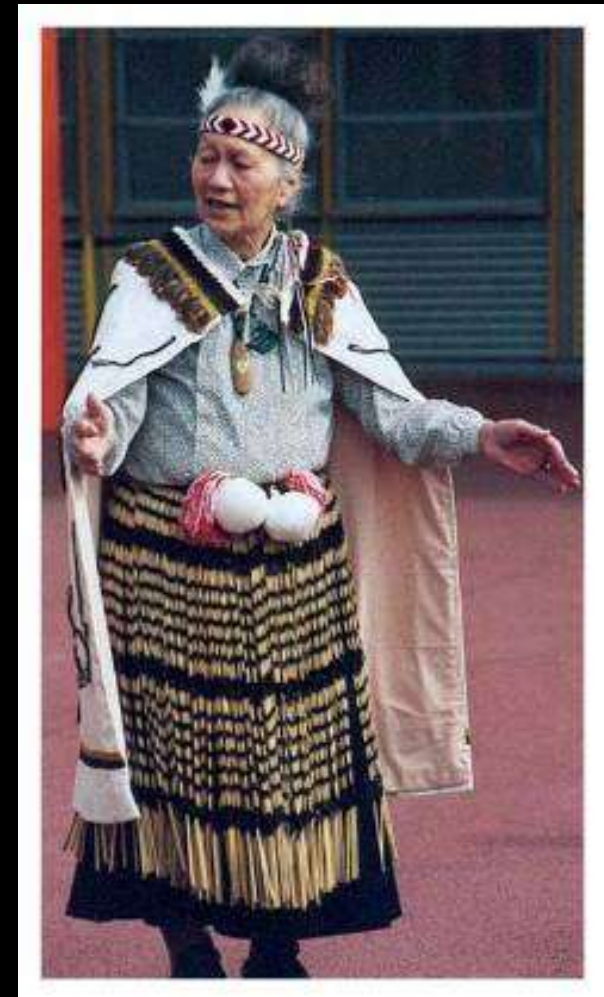


Whakarewarewa, Aotearoa, (New Zealand) 2009

HINEMIHI AND HER PEOPLE

“... she is someone who you should come and see when you are sick and unhappy and who will restore your sense of Maori identity”

(Rahera Windsor, *kuia* (elder) of Ngati Ranana, quoted in Hooper-Greenhill 1998)



WHARENOW!

BEING WITH HINEMIHI : SIX WORKSHOPS (WANANGA) FEBRUARY – JULY 2009

Being with *Hinemihi*

Te Kohanga Reo o Ranana
January – July 2009



WHARENOW!
BEING WITH HINEMIHI
FEBRUARY – JULY 2009



WHARENOW!

BEING WITH HINEMIHI : FEBRUARY – JULY 2009



HENRY

TOSIN



RIBA  

I like hinemihī because
~~she~~ she's pretty. She makes me feel
 important because she is special
 and she is my sister




www.ribavenues.com 020 7307 3888



RIBA  

Hinemihī reminds me
 of Kohanga.
 It reminds me of New
 Zealand. I like it because
 it is made of sticks and
 wood. It reminds me
 of hāngi.

outside inside



www.ribavenues.com 020 7307 3888

WHARENOW! BEING WITH HINEMIHI : FEBRUARY – JULY 2009
Ko au te whare (I am the house)



Amo, carved posts, Hinemihi's legs

Raparapa, carved bargeboard ends, Hinemihi's hands

TEKOTEKO, GABLE FIGUREHEAD CARVING



WHARENOW! BEING WITH HINEMIHI : FEBRUARY – JULY 2009

Ko au te whare (I am the house)



Ko au te whare

Whatitoka
(Door)
"mouth"

Matapihi
(Window)
"eye"

Tekoteko (Carved Gable figurehead)

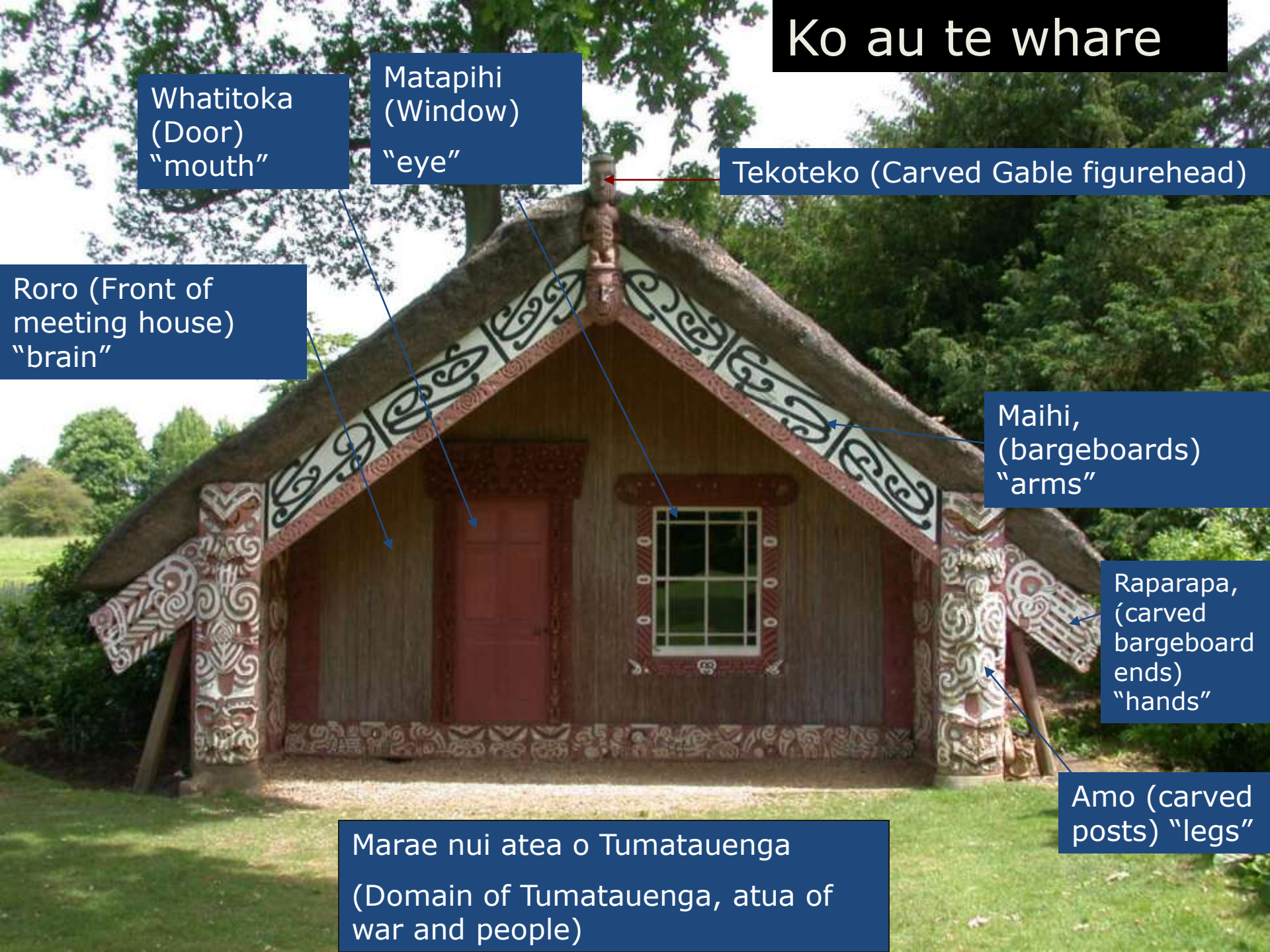
Roro (Front of
meeting house)
"brain"

Maihi,
(bargeboards)
"arms"

Raparapa,
(carved
bargeboard
ends)
"hands"

Amo (carved
posts) "legs"

Marae nui atea o Tumatauenga
(Domain of Tumatauenga, atua of
war and people)



Ko au te whare (I am the house)

TE KOHANGA REO O RANANA (MAORI LANGUAGE NEST, LONDON)



TE KOHANGA REO
LONDON

Ko au te whare (I am the house)



Visuality/Materiality: Reviewing
Theory, Method and Practice,
Conference July 11 2009



Te Kohanga Reo o Ranana hangi
June 2009

New Zealand
Network
Inaugural
conference July
2012



Ko au te whare (I am the house): Intercultural engagement

Origins
Festival
2011



Ko au te whare (I am the house): Intercultural engagement



Origins Festival 2011



Ko au te whare (I am the house):
Intercultural engagement

Origins Festival 2011

Children from Lake Tarawera
Native School, 1881 with
Hinemihi, Te Wairoa, New
Zealand.



Children from Te Kohanga
Reo o Ranana, 2007 with
Hinemihi, Clandon Park,
UK.

Sharing with Hinemihi

Please join us for a series of summer wananga/events to get to know Hinemihi, the Maori meeting house at Clandon Park



The sessions will be led by Rosanna Raymonds and will take place at Hinemihi and UCL Institute of Archaeology from May – September 2010. The sessions are open to all interested in understanding Hinemihi and her people.

Schedule for the sessions:

- May 15 Sharing Hinemihi's stories at UCL Institute of Archaeology
- May 23 Maori and Pacific Day of Dance at Hinemihi, Clandon Park
- May 29 Sharing with Hinemihi's people at UCL Institute of Archaeology
- June 6 Kaitiakitanga/Maintenance Day at Hinemihi, Clandon Park
- June 27 Kohanga Reo Hangi, at Hinemihi, Clandon Park
- August 29 (tbc) Staying with Hinemihi, at Clandon Park

Places are limited and awarded on a first come basis.

Please email Dean Sully d.sully@ucl.ac.uk for further details and to reserve a place. There is no charge for the sessions, however you will need to cover transport costs to Hinemihi, provide shared food for the events. Tickets will be required for those who wish to eat hangi food at the Kohanga Reo hangi.



WHARENOW! SHARING WITH HINEMIHI SIX WORKSHOPS (WANANGA) MAY- SEPTEMBER 2010



Staying with Hinemihi

wananga & noho marae
August 29th 2010

Today "Hinemihi's People" are holding a wananga/workshop on the future of Hinemihi at Clandon Park.



In addition, for the first time since Hinemihi has been at Clandon Park (1892), she is hosting a noho marae /sleepover: overnight 29-30 August.

This is a part of a series of events to develop Hinemihi as a living marae and a centre for Maori Cultural activity in the UK.



To receive information about the Hinemihi Project:
Please add your contact details to a list of "Hinemihi's People"
Or email a.sully@ucl.ac.uk



WHARENOW! "STAYING WITH HINEMIHI" NOHO MARAE AUGUST 2010



WHARENOW!

“STAYING WITH HINEMIHI” NOHO MARAE

AUGUST 2010



WHARENOW!
STAYING WITH HINEMIHI” NOHO MARAE
AUGUST 2010

Some of “Hinemihi’s People”



CONSERVATION BY NUMBERS



THE PLANNED OUTCOME



THE REAL OUTCOME



Maori weaving workshops



UCL, National Trust, WHAT-architecture and Te Maru O Hinemihi are organising a series of Maori weaving workshops to produce tukutuku panels (interior woven decorative wall panels) for the restoration for Hinemihi, the Maori Meeting house at Clendon Park, UK.



Tutors

James Schuster, Maori Built Heritage Adviser (Traditional Arts), NZ Historic Places Trust – Pouhere Taonga & Cathy Schuster, Weaver

UCL

The Institute of Archaeology,
University College of London
31-34 Gordon Square, WC1H 0PY
Room 412

14-16 May 2012, 9:30 am-4:30 pm each day

*The panels started at this workshop will be completed at UCL over the coming months
Please come along and learn about
Tukutuku weaving*



WHAT_architecture office,
Transworld House
100 City Road London, EC1Y 2BP
19-20 May 2012, 9:00 am-9:00 pm each day

National Trust

Clendon Park,
West Clendon,
Surrey, GU4 7RQ
22-24 May 2012, 9:30 am 4:30 pm each day

Please contact:

Dean Sully (d.sully@ucl.ac.uk)
to find out more about the
workshop series and future
Hinemihi events.

WHARENOW! WEAVING HINEMIHI'S PEOPLE: TUKUTUKU WEAVING WANANGA (THREE WORKSHOPS) MAY 2012



WHARENOW! WEAVING HINEMIHI'S PEOPLE: MAY 2012



WHARENOW! WEAVING HINEMIHI'S PEOPLE: MAY 2012





TE MARU O HINEMIHI (IN THE EMBRACE OF HINEMIHI)

A volunteer group, working in partnership with the National Trust, to create effective plans for Hinemihi's future use and care



Core values:

Kaitiakitanga (Guardianship)

Manakitanga (Hospitality)

Matauranga (Knowledge)

TE MARU O HINEMIHI (IN THE EMBRACE OF HINEMIHI)



“on a working level it is often proving acceptance by doing.....
....by earning the right”

Interview with Dean Whiting, Maori Built Heritage Advisor

How do you Restore a Meeting House?

Restoring Tutanekai wharenuī, Owhata marae, Rotorua, Aotearoa (New Zealand)

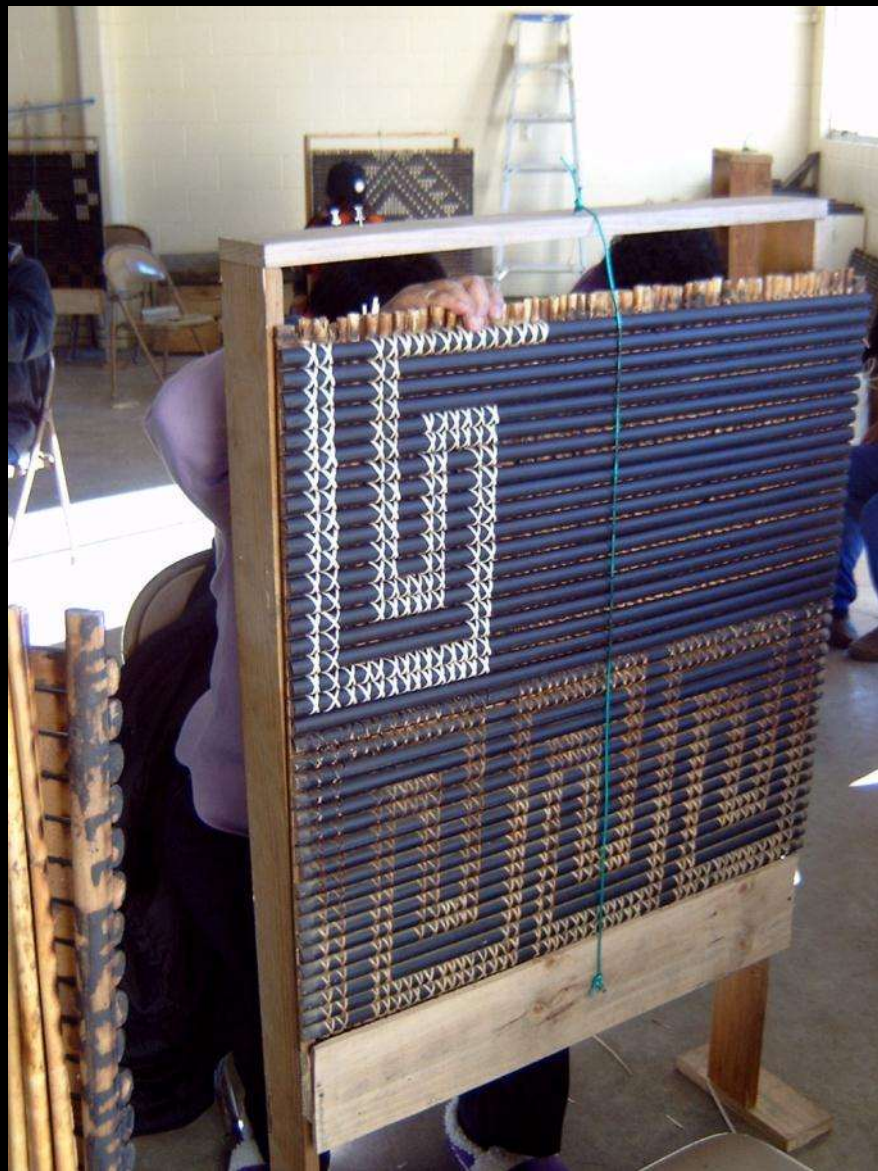


“The physical elements are important to conserve, but not at the expense of the relationships”

Interview with Dean Whiting, Maori Built Heritage Advisor

How do you Restore a Meeting House?

Restoring Tutanekai wharenui, Owhata marae, Rotorua, Aotearoa (New Zealand).



How do you Restore a Meeting House?

Restoring Tutanekai wharenui, Owhata marae, Rotorua, Aotearoa (New Zealand)



How do you Restore a Meeting House?

Restoring Tutanekai wharenui, Owhata marae, Rotorua, Aotearoa (New Zealand)



How do you Restore a Meeting House?

Restoring Tutanekai wharenuui, Owhata marae, Rotorua, Aotearoa (New Zealand)



How do you Restore a Meeting House?

Restoring Tutanekai wharenuī, Owkata marae, Rotorua, Aotearoa (New Zealand)



How do you Restore a Meeting House?

Restoring Tutanekai wharenuī, Owhata marae, Rotorua, Aotearoa (New Zealand)



How do you Restore a Meeting House?

Restoring Tutanekai wharenuī, Owhata marae, Rotorua, Aotearoa (New Zealand)



How do you Restore a Meeting House?

Restoring Tutanekai wharenui, Owhata marae, Rotorua, Aotearoa (New Zealand)



How do you Restore a Meeting House?

Restoring Tutanekai wharenui, Owhata marae, Rotorua, Aotearoa (New Zealand)



How do you Restore a Meeting House?

Restoring Tutanekai wharenui, Owhata marae, Rotorua, Aotearoa (New Zealand)



How do you Restore a Meeting House?

Restoring Tutanekai wharenui, Owhata marae, Rotorua, Aotearoa (New Zealand)



How do you Restore a Meeting House?

Restoring Tutanekai wharenuui, Owhata marae, Rotorua, Aotearoa (New Zealand)



“It is case by case really”

Interview with James Schuster, Maori Built Heritage Advisor

How do you Restore a Meeting House?

Restoring Tutanekai wharenui, Owhata marae, Rotorua, Aotearoa (New Zealand)



CONSERVING HINEMIHI /BUILDING RELATIONSHIPS



UCL conservation students conducting a condition survey of Hinemihi, 2003



CONSERVING HINEMIHI /BUILDING RELATIONSHIPS

HINEMIHI MAINTENANCE DAYS: NGATI RANANA, KOHANGA REO, UCL INSTITUTE OF ARCHAEOLOGY



Kaitiakitanga: Maintenance of Hinemihi in preparation for the 2012 Kohanga Reo Hangi

Please join us for this year's Hinemihi maintenance day



**Hinemihi
Clandon Park
West Clandon
Surrey**

**Sunday June 10
(11.00 am - 4.00 pm)**

This annual event brings together people from Hinemihi's community (Ngāti Ranana, Kohanga Reo, and Maramara Totara, National Trust and UCL volunteers) to ensure that Hinemihi is suitably prepared in advance of the Kohanga Reo Hangi celebrations on 24 June

No previous conservation experience is needed to participate in the maintenance activities and help in keeping Hinemihi warm



Hinemihi maintenance days; 2004-2011

Please contact: Dean Sully d.sully@ucl.ac.uk for information about the maintenance day and becoming one of Hinemihi's People



CONSERVING HINEMIHI /BUILDING RELATIONSHIPS

HINEMIHI MAINTENANCE DAYS: NGATI RANANA, KOHANGA REO, UCL INSTITUTE OF ARCHAEOLOGY



CONSERVING HINEMIHI /BUILDING RELATIONSHIPS

HINEMIHI MAINTENANCE DAYS: NGATI RANANA, KOHANGA REO, UCL INSTITUTE OF ARCHAEOLOGY



pictures from kohanga reo children,
2005

CONSERVING HINEMIHI: CREATING THE "ORIGINAL" HINEMIHI



Giles Quarme & Associates
Dimensions of Hinemihi
05-06-00 scaled perspective photograph, Burton Brothers;
agreed width - 6.7m
agreed height - 3.9m
suggested length - 12.7m

CONSERVING HINEMIHI : PAINT ANALYSIS

MOUNTING, EXAMINATION AND ANALYSIS OF CROSS SECTIONS



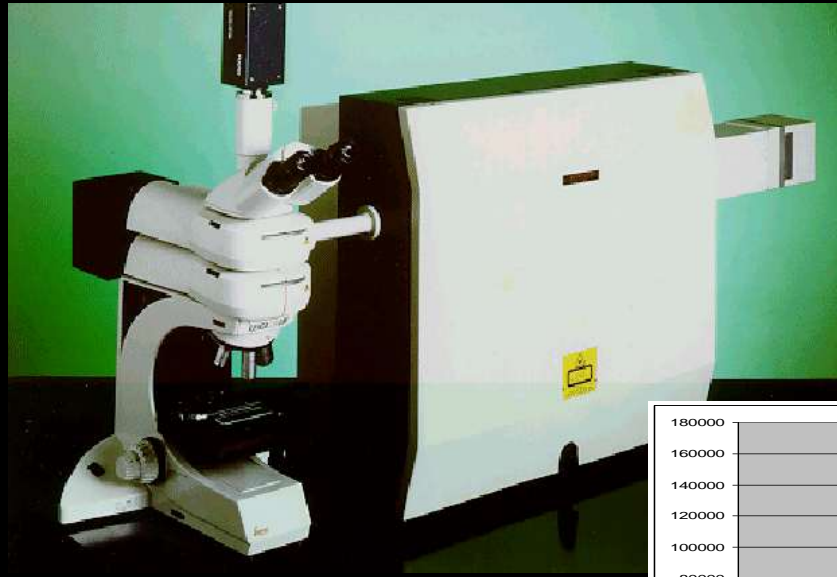
Cross section from the 'arm' of the Maori House viewed under the microscope (x10) with reflected light showing thirteen paint layers.



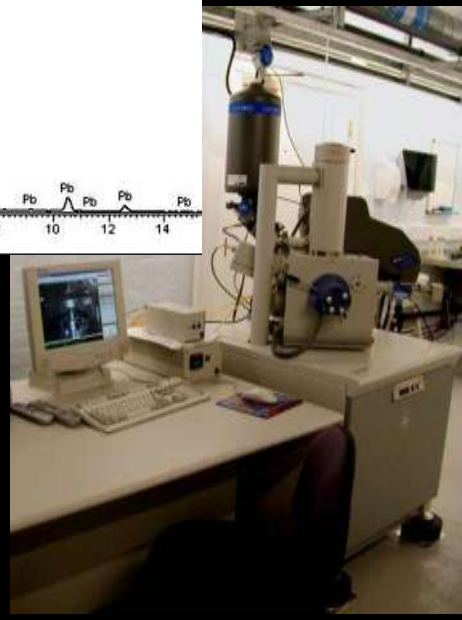
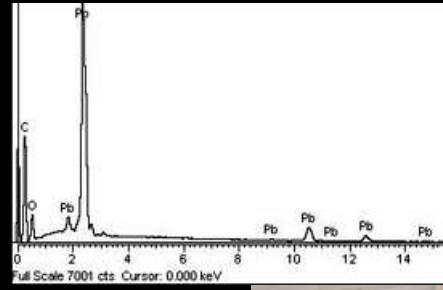
Cross section from the 'arm' of the Maori House viewed under the microscope (x10) with light showing the fluorescence of the thirteen paint layers.

Polarised light microscopy

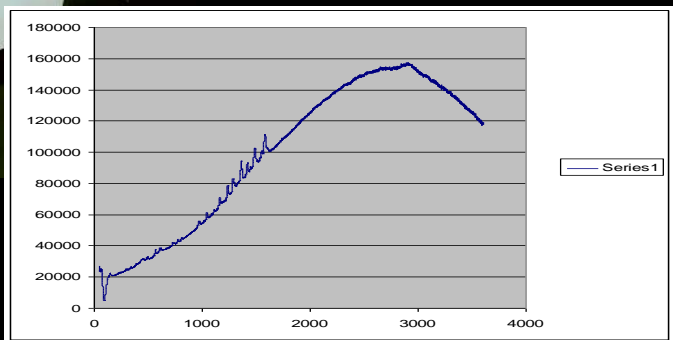
Reflected light microscopy



Raman spectrum of Pigment Red 112



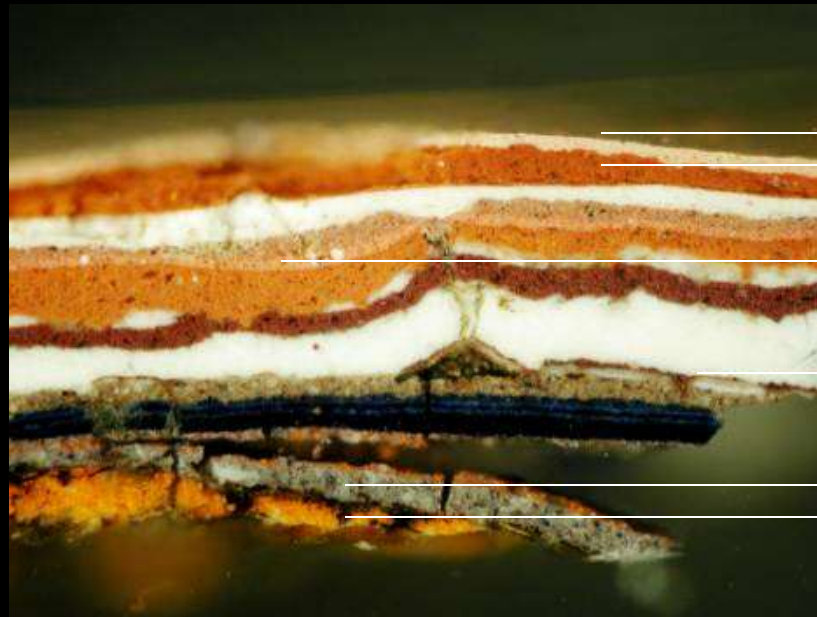
SEM-EDX



CONSERVING HINEMIHI : PAINT ANALYSIS

Initial paint analysis : historical paint sequence 1880-1995

Reflected light microscopy



Polarised light microscopy

1995

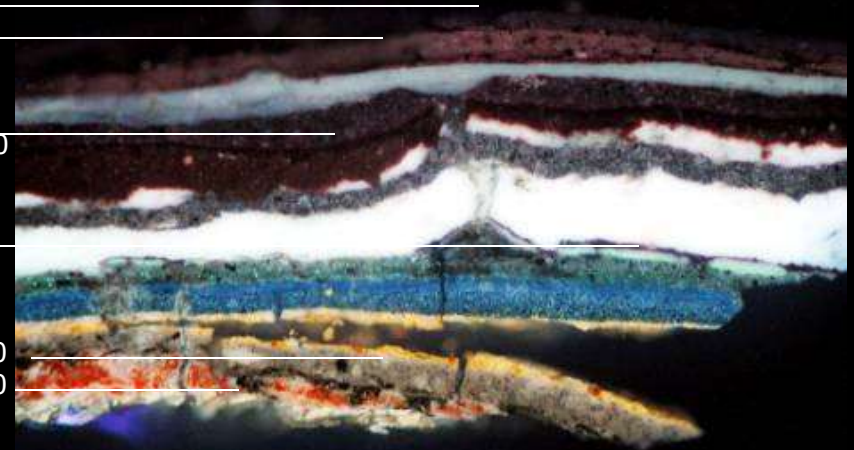
1981

1960

1919

1890

1880



CONSERVING HINEMIHI: CREATING THE "ORIGINAL" HINEMIHI



CONSERVING HINEMIHI: CREATING THE “ORIGINAL” HINEMIHI

Giles Quarme & Associates

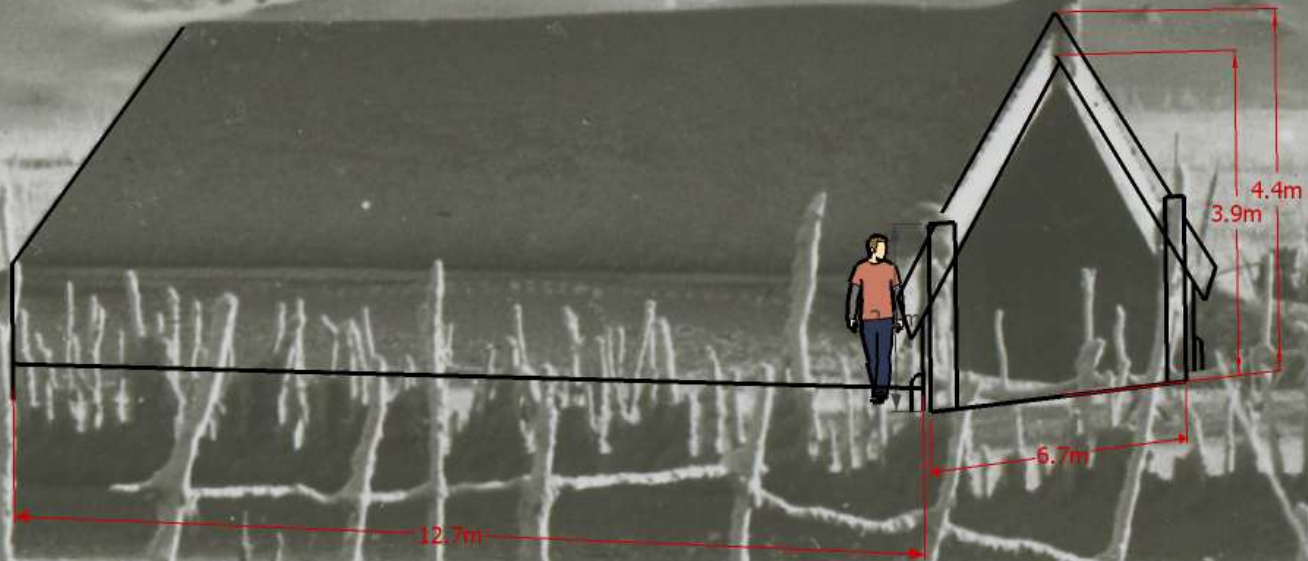
Dimensions of Hinemihi

08-06-09 scaled perspective photograph(Burton Brothers)

agreed width - 6.7m

agreed height - 3.9m

suggested length - 12.7m



This drawing/phtograph has been sent up orthographically to scale from the photograph and to known width and height dimensions using SketchUp.

CONSERVING HINEMIHI: CREATING THE "ORIGINAL" HINEMIHI

DWG NO:
C-03B

DWG TITLE:
PHOTOGRAPHIC
EVIDENCE USING
AMO TO SCALE

PROJECT:
072hin_HINEMIHI

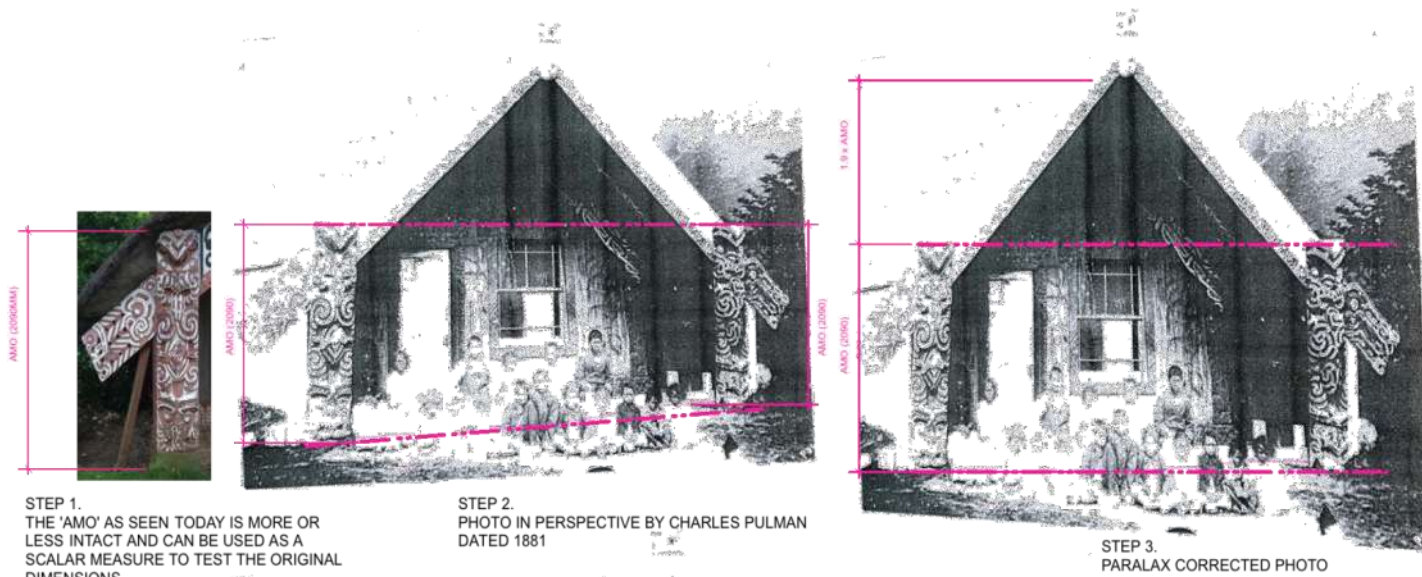
NOTES:

REVISIONS:



STATUS:	DESIGN
DATE:	01CT-2007
SCALE:	
DRAWN:	AS
<small>CHECK ALL DIMENSIONS ON SITE. DO NOT SCALE FROM THIS DRAWING. SEE HEAD IN CONSULTATION WITH ALL CONSULTANT INFORMATION. WHAT_ARCHITECTURE RETAINS COPYRIGHT OF ALL INFORMATION WITHIN THIS DRAWING.</small>	
+44-20-7739-7373 +44-7779-024711 info@whatarchitecture.com www.whatarchitecture.com 5 Ravenscroft Street, London E275H	

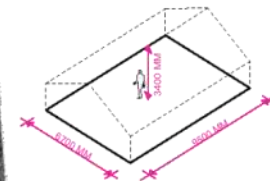
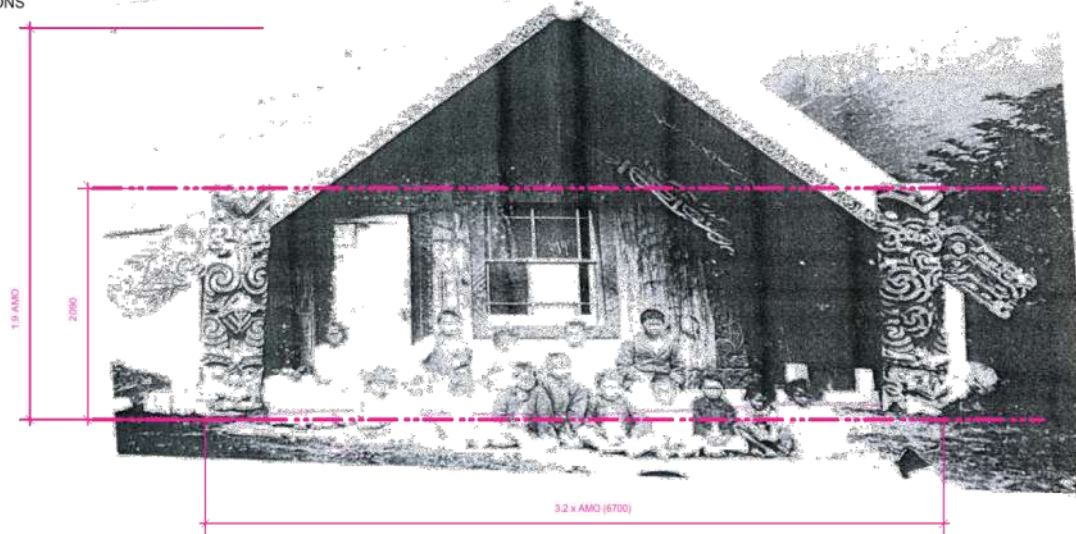
WHAT ARCHITECTURE
Life without buildings!



STEP 1.
THE 'AMO' AS SEEN TODAY IS MORE OR LESS INTACT AND CAN BE USED AS A SCALAR MEASURE TO TEST THE ORIGINAL DIMENSIONS

STEP 2.
PHOTO IN PERSPECTIVE BY CHARLES PULMAN DATED 1881

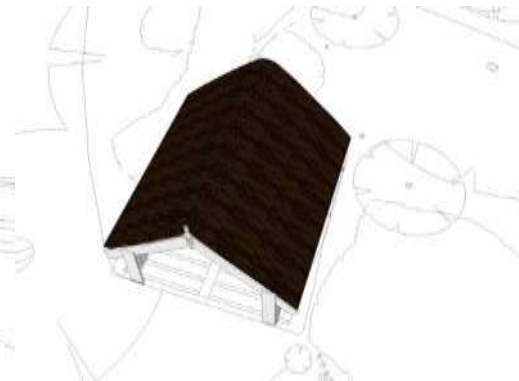
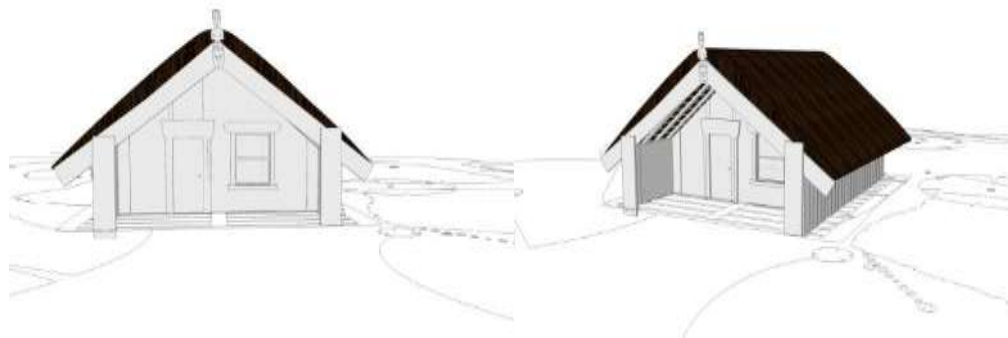
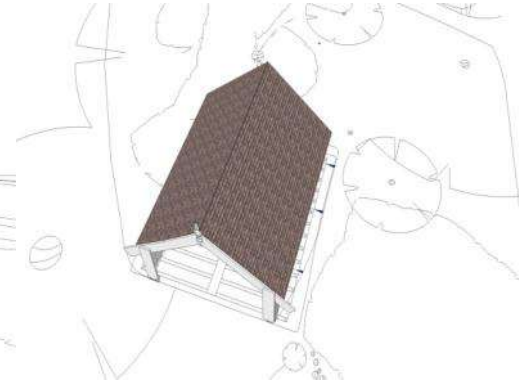
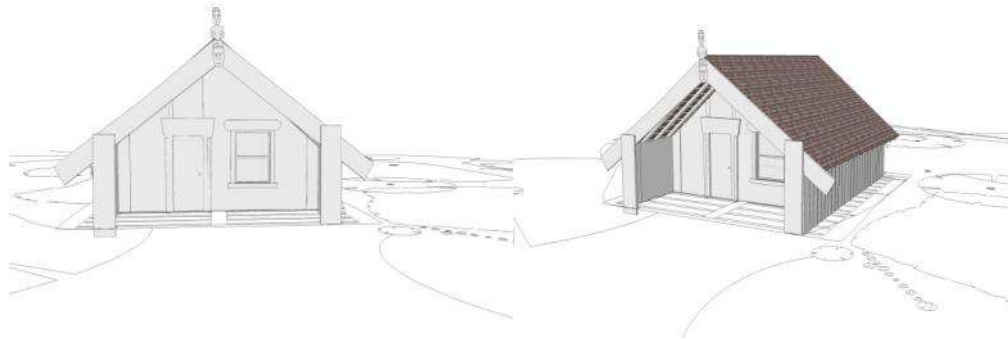
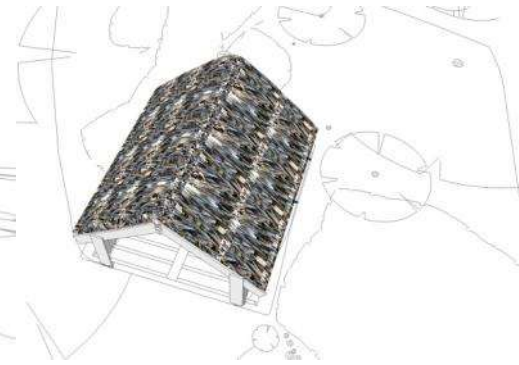
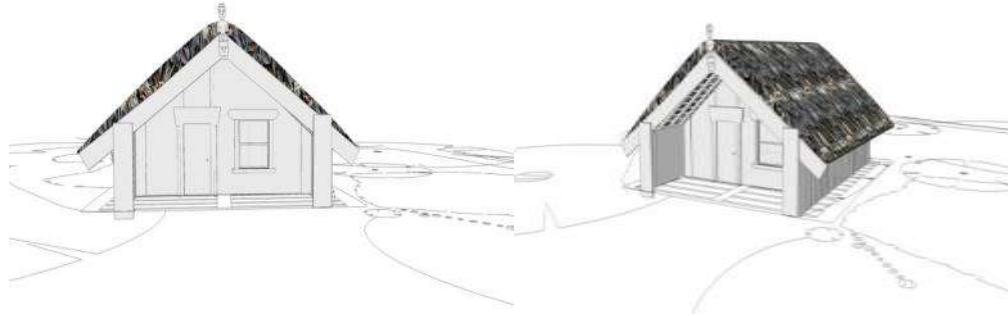
STEP 3.
PARALAX CORRECTED PHOTO



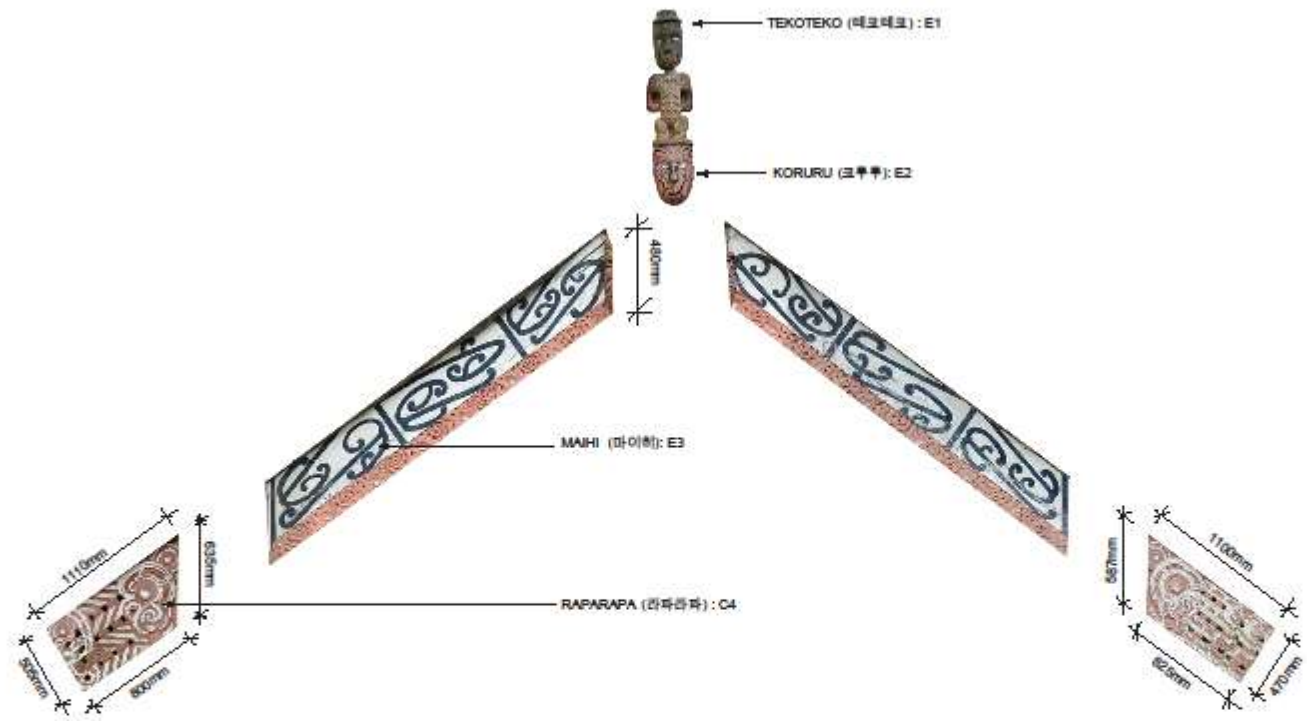
PURPORTED 'ORIGINAL' DIMENSIONS ACCORDING TO NATIONAL TRUST BRIEF DATED 10-AUG-07 WHICH IS ITSELF BASED UPON THE BOOK 'HOUSE WITH THE GOLDEN EYES'

STEP 4.
'CORRECT' WIDTH ACCORDING TO NT BRIEF

CONSERVING HINEMIHI: CREATING THE "ORIGINAL" HINEMIHI



CONSERVING HINEMIHI: CREATING THE "ORIGINAL" HINEMIHI



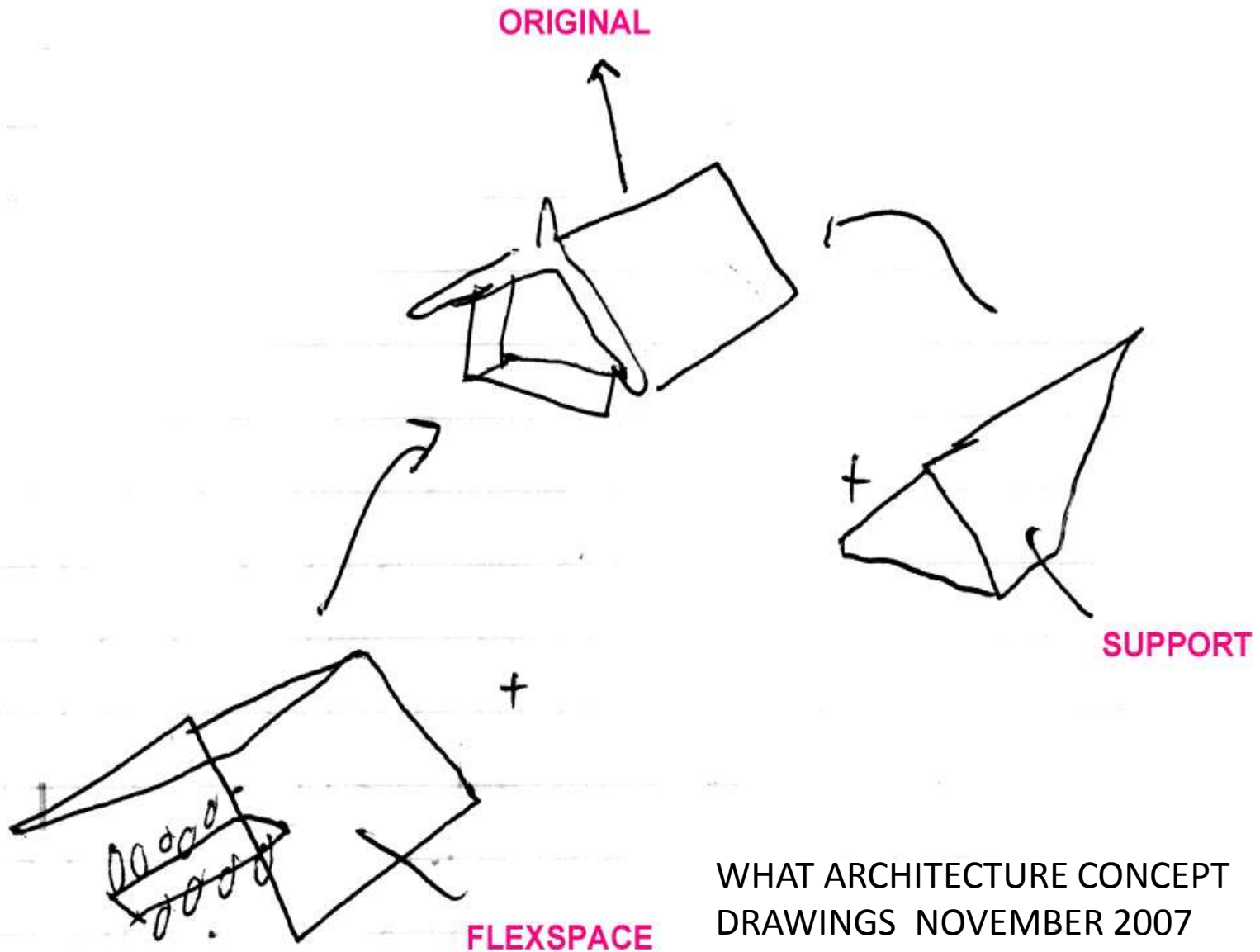
DWG NO:	C-19
DWG TITLE:	EXTERNAL CARVING SCHEDULE
PROJECT:	07210a_HINEMIHI
REVISED:	
REVISIONS:	
DATE:	1997-2017
SCALE:	1:1
PROJECT:	
WHAT ARCHITECTURE	
100 City Road	
London EC1Y 1SP UK	
www.whatarchitect.com	
020 7514 3388	
what@whatarch.com	



CONSERVING HINEMIHI: CREATING A FUNCTIONING MARAE



CONSERVING HINEMIHI: CREATING A FUNCTIONING MARAE

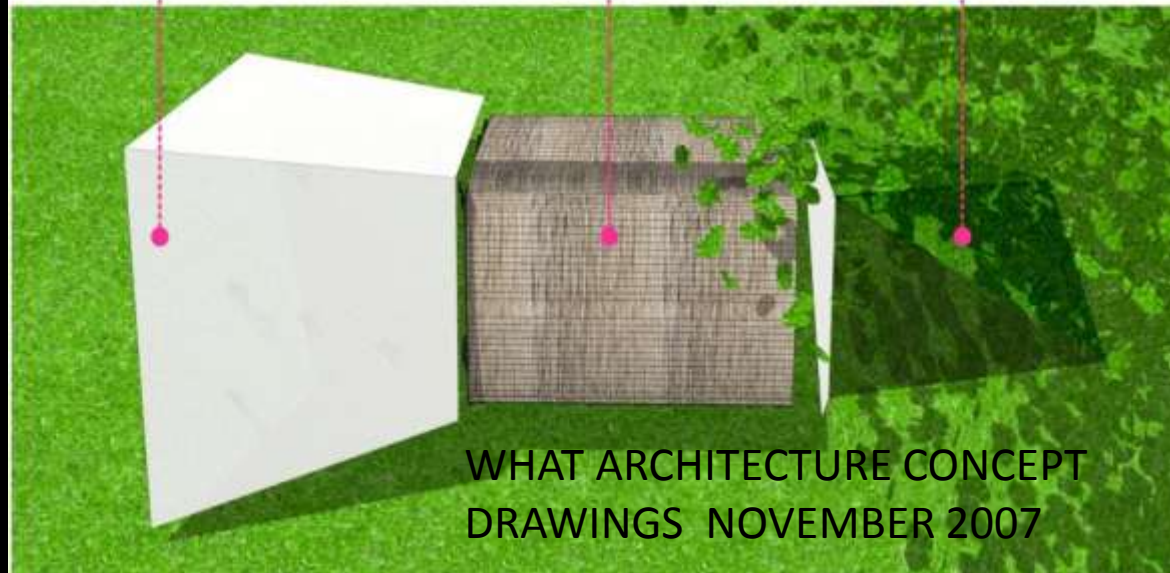
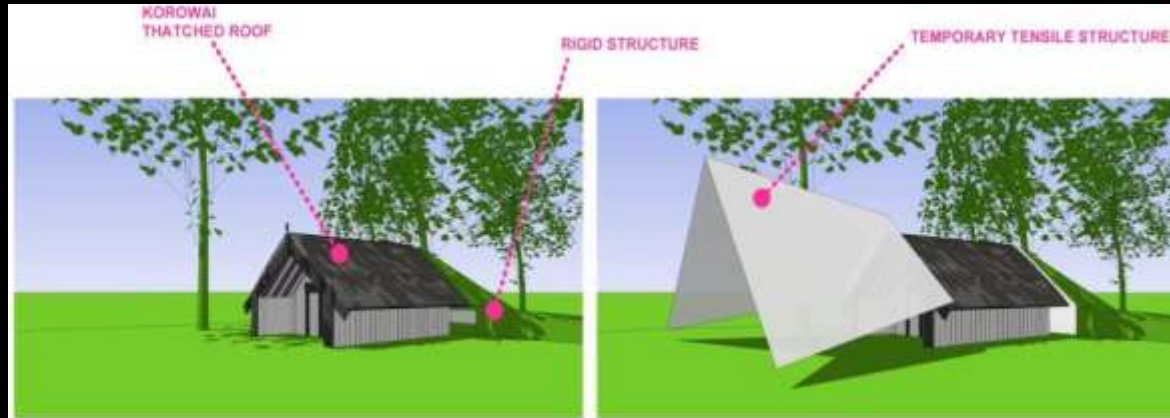


CONSERVING HINEMIHI: CREATING A FUNCTIONING MARAE



WHAT ARCHITECTURE CONCEPT DRAWINGS
NOVEMBER 2007

CONSERVING HINEMIHI: CREATING A FUNCTIONING MARAE



CONSERVING HINEMIHI: CREATING A FUNCTIONING MARAE



“It is a part of sitting down and talking with the people and seeing what they want in the first place” Jim Schuster 2010

A dialogue between Julie Lawlor (National Trust Property manager at Clandon Park) and James Schuster (Ngati Hinemihi and New Zealand Historic Places Trust conservator)

CONSERVING HINEMIHI: 5 OPTIONS FOR THE FUTURE: THE “5 R s”



R1 Repair

Repair is a short-term quick fix to repair the existing elements of the building. This would improve the current condition, but would maintain the status quo at Clandon Park

CONSERVING HINEMIHI: 5 OPTIONS FOR THE FUTURE: THE “5 R s”



R2 Restoration

Restoration aims to preserve the building as a “museum artefact”, so seeks to present the building as it was at some specific point in time, such as 1880s Te Wairoa. This would suggest Hinemihi is viewed as an historic artefact rather than a living building

CONSERVING HINEMIHI: 5 OPTIONS FOR THE FUTURE: THE “5 R s”



R3: Re-use

R3 Re- use

Re-use would mean adapting the Historic building to make it fit for some activities, but maintaining the main fabric of the building. This would include all the changes required for Restoration, with the addition of some new elements, such as a new floor, electricity supply/heating/lighting.

CONSERVING HINEMIHI: 5 OPTIONS FOR THE FUTURE: THE “5 R s”



R4 Redevelop

Redevelopment would consist of restoring the existing building, but in addition adding a whare manaaki (services building that contain cooking and washing facilities) as well as a pop-up bespoke performance awning.

This would allow Hinemihi to be used as a functioning marae.

CONSERVING HINEMIHI: 5 OPTIONS FOR THE FUTURE: THE “5 R s”



R5 Relocate

Relocating Hinemihi does not necessarily mean repatriation to New Zealand; it could involve relocation within Britain, possibly to a museum gallery.

CONSERVING HINEMIHI: CREATING A FUNCTIONING MARAE



R4: Redevelopment has been the preferred option of the Hinemihi Project Steering group and formed the basis of a HLF phase 1 funding application in 2011.

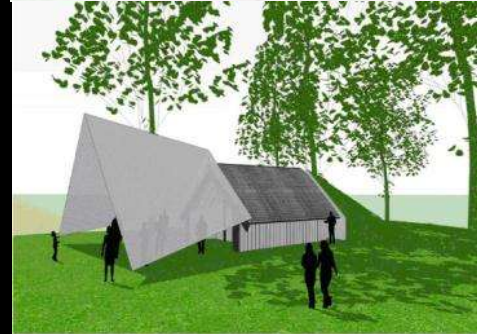
CONSERVING HINEMIHI: CREATING A FUNCTIONING MARAE

“Fit for Purpose”

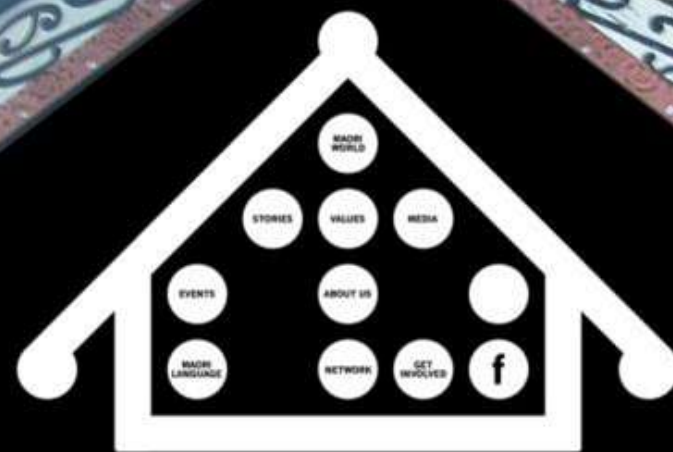


“Before” Conservation

“Hinemihi is a living building not a dead artifact. The wharenuī should not be preserved through authentic reconstruction but allowed to grow, to evolve as a living space” Anthony Hoete, WHAT_Architecture



“After” Conservation?



TE MARU O HINEMIHI